

AppDev OnDemand Enterprise™
USER GUIDE



Welcome to AppDev OnDemand Enterprise.

In this User Guide, you will find information relating to technical specifications, accessing your AppDev OnDemand Enterprise course(s), and tips for making the most of your training.

Thank you for choosing AppDev OnDemand Enterprise for your learning needs. If you have any questions or need technical support, please email your questions to enterprise@appdev.com.

Technical Specifications

Hardware Requirements

- Pentium III or higher
- 512 MB RAM or higher
- 20 MB disk space
- 64 MB graphics card or higher
- Compatible sound card
- Compatible keyboard and mouse

Software Requirements

- Microsoft® Windows® XP Professional, Microsoft® Windows® 7 or Microsoft® Windows® Vista
- Microsoft® Internet Explorer 6.0 or higher
- Microsoft® Media Player 10.0 or higher and supported video drivers and codecs
- Microsoft® Silverlight™ 3
- Adobe® Acrobat® Reader 9.0 or higher

Questions? Email your questions to enterprise@appdev.com.



Installation

Please review the Technical Specifications before accessing AppDev OnDemand Enterprise. If these requirements have been met, you can begin your AppDev OnDemand Enterprise experience by following these steps...

Step 1: Access AppDev

To access the Log In page for AppDev OnDemand Enterprise, launch Internet Explorer and navigate to <http://enterprise.appdev.com>.

Step 2: Log In

Enter your login information into the appropriate fields.

Company Name:

You need to get your login information from your system administrator.

User Name:

Please note that your password is case-sensitive and must be at least five characters in length.

Password:

Step 3: Install the AppDev Learning Engine (ALE)

After login, you will be directed to the Agenda Page and instructed to install the AppDev Learning Engine (ALE). Under the list of assigned courses, you will see a button to install the ALE. Click this button and the system will lead you step-by-step through the ALE installation process. As you go through the step-by-step installation process you can hover the mouse over any step to get additional information. Be sure to complete all installation steps before moving on.

The screenshot shows the AppDev OnDemand Enterprise user interface. At the top left is the AppDev logo with the tagline "Technical learning...in a class by itself". The user is logged in as "nathanb AppDevCO". There are "Logout", "AppDev | edge", and "HELP" buttons in the top right. A yellow banner contains a note: "NOTE: For a smooth installation, please add http://*.appdev.com to your browser's Trusted Sites. [How?](#)".

The main content area is titled "APPDEV LEARNING ENGINE INSTALLATION" and includes the instruction: "Please follow the step-by-step instructions below by clicking on each step. Hover your mouse over each step for more information." Below this are five steps, each in a button:

- Step 1**: Detect Required Software
- Step 2**: Update Media Player Security | Verify
- Step 3**: Install Microsoft Silverlight | Verify
- Step 4**: Verify Installation | Check Bandwidth
- Return**: Return to Home Page

A note for Windows 7 users is displayed: "NOTE FOR WINDOWS 7 USERS: Please [click here](#) to update your Media Player security." The AppDev logo is also present in the bottom right corner of the interface.

Getting Started

Once you have logged into AppDev OnDemand Enterprise, you can easily launch courses, change your settings, or run reports. Before beginning your learning sessions, it is helpful to familiarize yourself with these system features...

Agenda

This is the main user screen where you can view your assigned courses and detailed course outlines. Courses are separated into tabs for each library that has been purchased, Microsoft Library, Java Library and etc.

Two different views can be selected from the drop down at the top right of the page, List View or Group View.

For each course, you can see your course completion goal date (if assigned by your administrator), and you can see what percentage of the course you have completed.

You can launch a course from the beginning, by clicking on the title. You can also jump right to a specific module within the course, or to a bookmark returning you to the last subtopic viewed. Refer to your company policy for guidelines for using the training.

Options

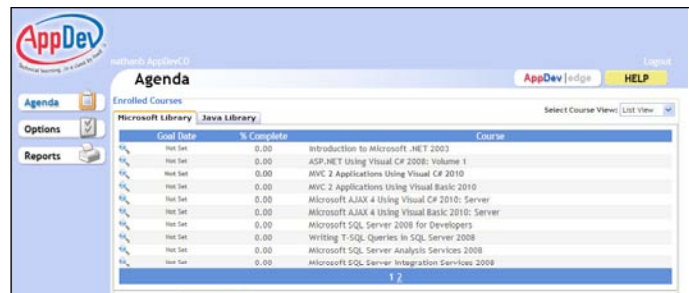
In the Options area, you can change your User Name, Email, Time Zone, and your login password. (Please keep in mind passwords are case-sensitive and must be at least 5 characters in length.)

NOTE: Because the ability to change user settings is controlled by the administrator, you may not be allowed to change all of these settings.

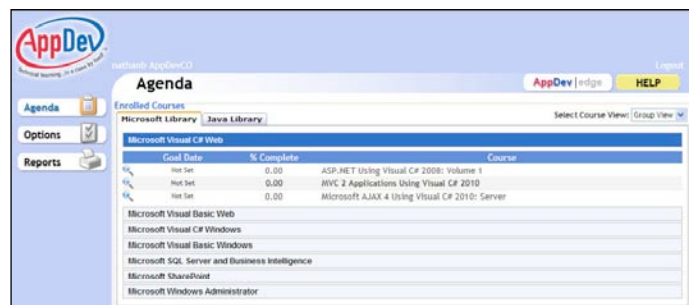
Reports

You have the ability to monitor your own progress in the Reports screen. You can generate reports on various criteria:

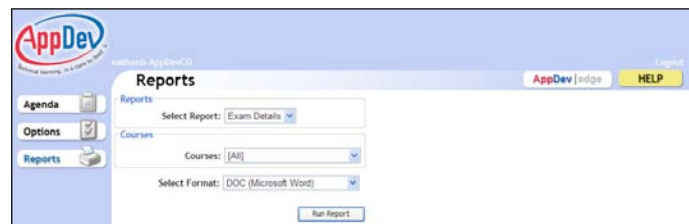
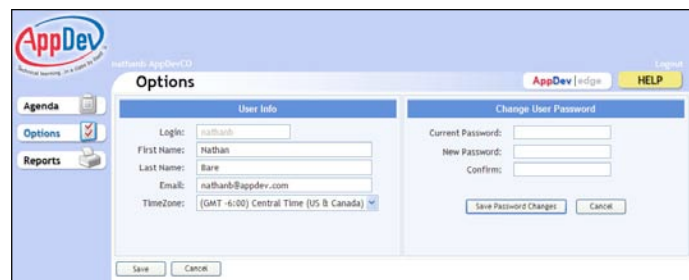
- Exam Summary by User Report
- Course Summary by Course Report
- Exam Detail



List View



Group View



These reports are available in several formats including: DOC, RTF, XLS, PDF, and HTML.



The AppDev Learning Experience

Once you have launched a course, you will begin your AppDev learning experience. AppDev courses feature everything you need to get up to speed quickly, featuring expert instructor-led learning modules plus extra resources like hands-on lab exercises and sample code, an online course book, and pre/post exams. Read on to learn more about these tools, then review page four of the User Guide for suggestions on how to use these resources to create the best learning experience.

Instructor-led Learning Modules

AppDev OnDemand Enterprise provides an engaging, practical learning experience, much like attending an instructor-led class right at your computer. Our expert instructors will lead you step-by-step through demonstrations and code walkthroughs that allow you to see the steps and hear the explanations with each task performed. Simply click the play button or click on a topic to launch the instructor-led learning module.



Pre/Post Exams

Before viewing each learning module, visit the Exams tab and assess your knowledge using the pre-exam. Simply answer a series of questions and then use the analysis tool to see your level of understanding before beginning the course. The results are stored until you exit the application.

After completing each learning module, take the post-exam to identify areas of strength, and areas that may be in need of additional learning time. The exam will be graded after you have completed all of the questions. The results are stored externally so they can be used for further review. Based on your score, you can re-watch any topics you would like to spend more time on. You can jump right to specific topics using the course index or the scrubber bar. You may also run reports showing your exam results.



Tips For Learning Success

To get the most from your AppDev OnDemand Enterprise learning, we suggest you work through each learning module and resources in the order shown below.

1 Take the Pre-Exam.

- Click on the Exam tab **A**.
- Take the pre-exam to assess your knowledge of topics covered in the module.

2 Watch the Instructor-Led Learning Module.

- Click on the first topic in the module index **B** to launch the module.

The module index is used to select modules, topics and sub-topics within each course. You can use this feature to jump to specific topics and subtopics. This feature makes the courses not only an excellent learning tool, but also a quick reference for accessing specific topics as you work on future projects.

3 Take the Post-Exam.

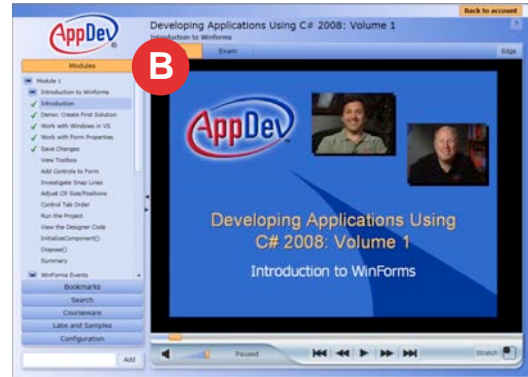
- Click on the Exam tab **C**.
- Take the post-exam. Based on your score, re-watch any topics you would like to spend more time on.

4 Perform the Lab Exercises.

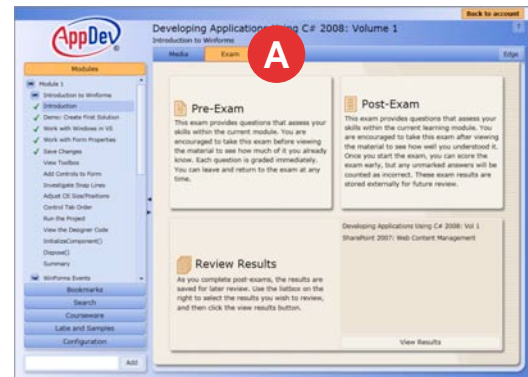
- Reinforce key concepts by working through the lab exercise found at the end of each courseware chapter.

Note: Lab exercises are found at the end of each chapter in your course book, which may or may not coincide with the end of each module.

5 Repeat steps 1 thru 4 for each module.



Main Screen



Exam Screen